

# Wyndham Two Door Vanity

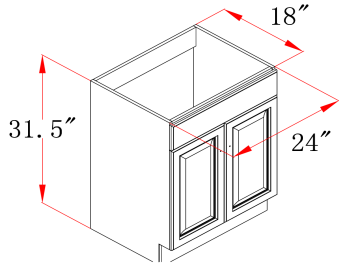


## Specifications

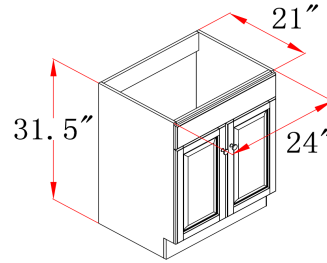
- Cam-lock connectors for fast & easy assembly
- Durable thermofoil, full overlay door design
- Frameless design for increased storage space and accessibility
- Silver finish hardware
- White Semi-Gloss Finish
- Vanity top sold separately



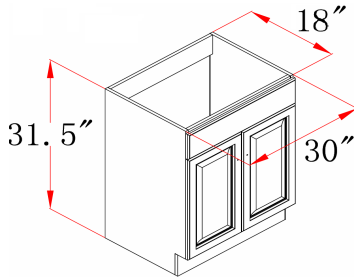
## Dimensions



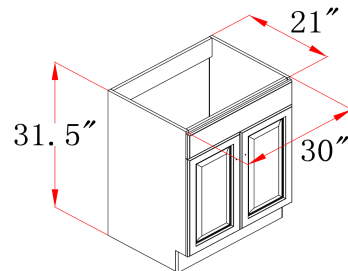
531731



531939



531749



531947

## Warranty & Compliances

**Warranty** Limited 1 year warranty  
**California 93120** Compliant



## Order Codes & Finishes/Colors

24" w x 18" d x 31.5" h	531731
24" w x 21" d x 31.5" h	531939
30" w x 18" d x 31.5" h	531749
30" w x 21" d x 31.5" h	531947

**Type:**

**Job:**

**Order Code:**

**Approvals:**