

Wyndham Two Door Vanity

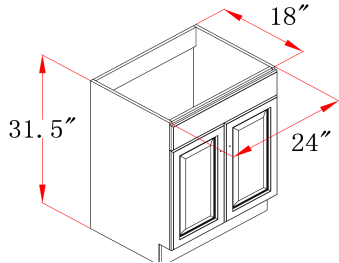


Specifications

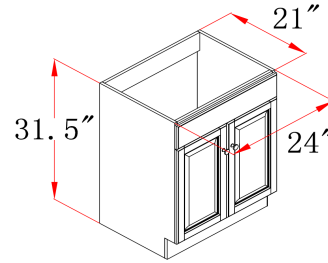
- Cam-lock connectors for fast & easy assembly
- Durable thermofoil, full overlay door design
- Frameless design for increased storage space and accessibility
- Silver finish hardware
- White Semi-Gloss Finish
- Vanity top sold separately



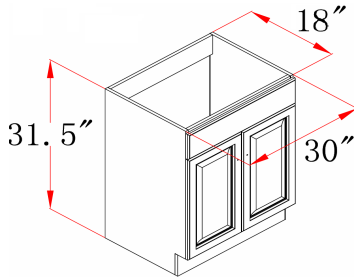
Dimensions



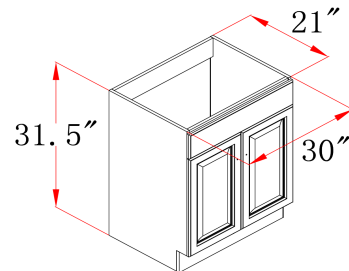
531731



531939



531749



531947

Warranty & Compliances

Warranty Limited 1 year warranty
California 93120 Compliant



Order Codes & Finishes/Colors

24" w x 18" d x 31.5" h	531731
24" w x 21" d x 31.5" h	531939
30" w x 18" d x 31.5" h	531749
30" w x 21" d x 31.5" h	531947

Type:

Job:

Order Code:

Approvals: