

Wyndham Two Door Vanity

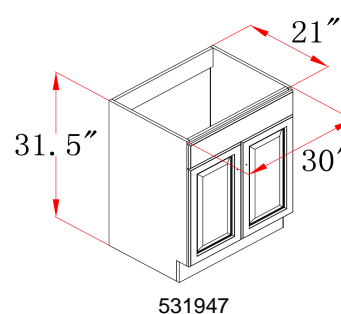
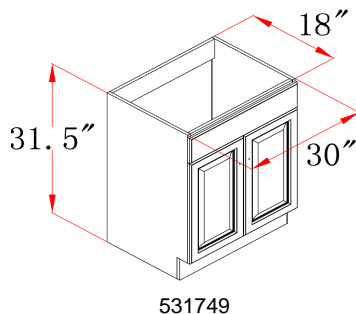
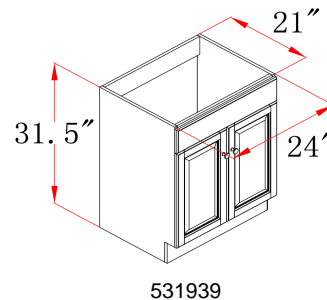
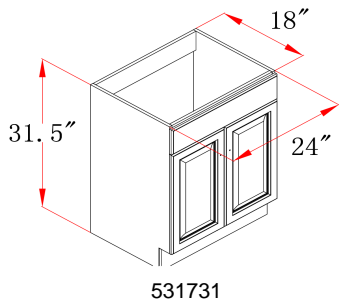


Specifications

- Cam-lock connectors for fast & easy assembly
- Durable thermofoil, full overlay door design
- Frameless design for increased storage space and accessibility
- Silver finish hardware
- White Semi-Gloss Finish
- Vanity top sold separately



Dimensions



Warranty & Compliances

Warranty	Limited 1 year warranty
California 93120	Compliant



Order Codes & Finishes/Colors

24"w x 18"d x 31.5"h	531731
24"w x 21"d x 31.5"h	531939
30"w x 18"d x 31.5"h	531749
30"w x 21"d x 31.5"h	531947

Type:

Job:

Order Code:

Approvals: