

# Claremont Two Door Vanity

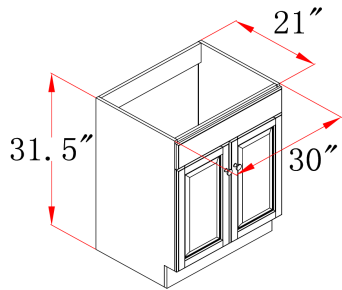


## Specifications

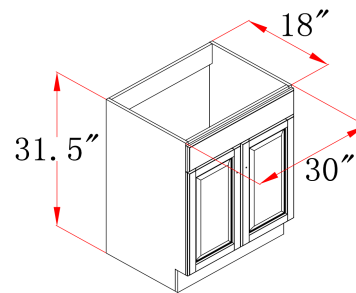
- Solid wood door frames and drawer fronts
- Raised panel veneer, full overlay door design
- Frameless design for increased storage and accessibility
- Aged brass hardware
- Concealed, adjustable hinges
- Cam-lock connectors for fast & easy assembly
- Vanity top sold separately



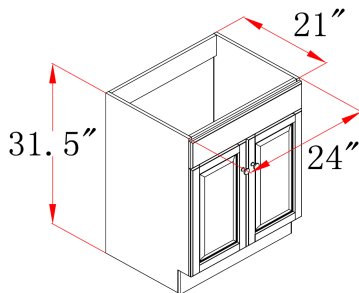
## Dimensions



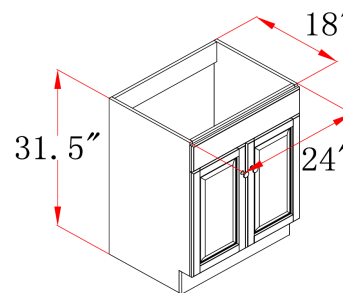
533471



531996



533190



531988

## Warranty & Compliances

**Warranty** Limited 1 year warranty  
**California 93120** Compliant



## Order Codes & Finishes/Colors

30" w x 21" d x 31.5" h	533471
30" w x 18" d x 31.5" h	531996
24" w x 21" d x 31.5" h	533190
24" w x 18" d x 31.5" h	531988

Type:  
Job:  
Order Code:  
Approvals:

Design House reserves the right to make changes in materials, specifications & models at any time. Design House also reserves the right to discontinue product without notice or obligation.