

Claremont Tri-View Medicine Cabinet

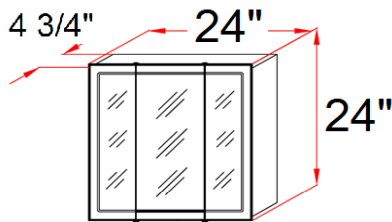


Specifications

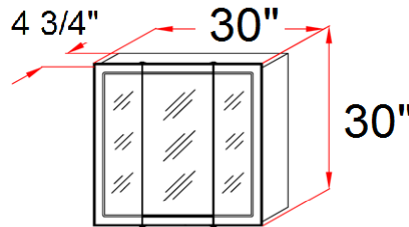
- Solid Oak frame with Honey Oak finish
- MDF box with PVC sides and bottom
- Polished brass T-hinge
- Pre-assembled design
- 3 doors
- 2 fixed shelves
- California 93120 CARB P2 compliant



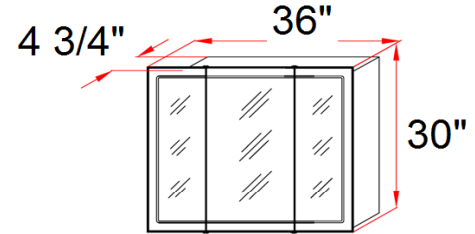
Dimensions



545277



545301



545285

Warranty & Compliances

- Warranty** Limited 1 year warranty
- California 93120** CARB P2 Compliant



Order Codes & Finishes/Colors

- 24" w x 4.75" d x 24" h 545277
- 30" w x 4.75" d x 30" h 545301
- 36" w x 4.75" d x 30" h 545285

Type:
Job:
Order Code:
Approvals:

Design House reserves the right to make changes in materials, specifications & models at any time. Design House also reserves the right to discontinue product without notice or obligation.