

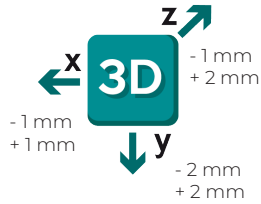
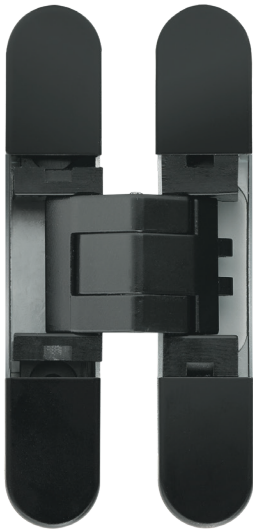


MAINTENANCEFREE

3/4" DOORS

929

76mm x 14mm
3" x 9/16"



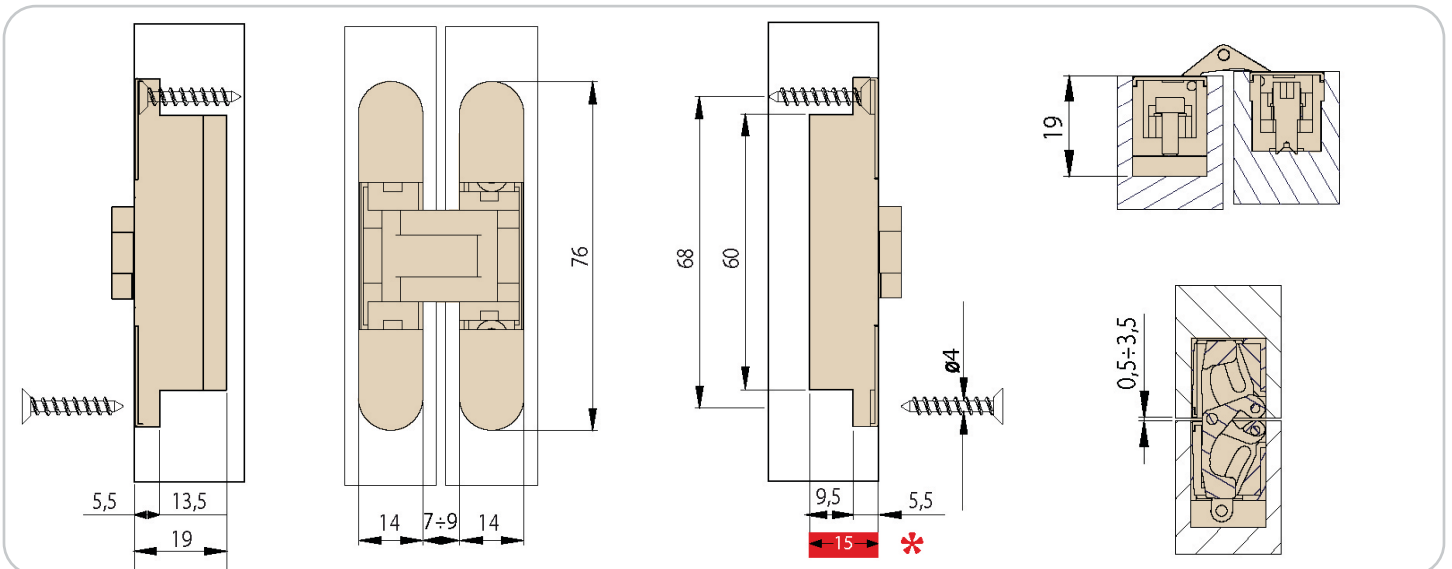
MAIN FEATURES

- Available in 4 different finishes.
- The first CEAM 3D hinge for cabinets.
- Suitable for 3/4" minimum door thickness.
- Easy 3D adjustability with one simple tool.
- Fluid 180° opening.
- Elegant Maintenance Free design with no visible screws.
- Hinges are tested for a minimum of 200,000 opening cycles.
- 100% Made in Italy.

Color	Item	Description
	C929NK	3D Invisible Hinge 76 x 14 Nickel Plated
	C929BLK	3D Invisible Hinge 76 x 14 Matte Black
	C929SIL***	3D Invisible Hinge 76 x 14 Silver
	C929WHT***	3D Invisible Hinge 76 x 14 White

***Special order color / Item

MODEL	TECHNOLOGY	MATERIAL	DIMENSION L - W - D mm / Inches	MINIMUM DOOR THICKNESS mm / Inches	RANGE OF REVERSIBILITY mm / Inches	LOAD CAPACITY kg / lbs		
						2 hinge	3 hinge	4 hinge
929	Concealed Hinge	Zinc and Fiberglass	76 x 14 x 15mm 3" x 9/16" x 5/8"	18mm 11/16"	18 - 21mm 11/16" - 13/16"	12 kg 26 lbs	16 kg 35 lbs	21kg 46 lbs



Note: Manufacturing tolerance are based on metric dimensions.
Fractions are for reference only.

made in italy

