

8

7

6

5

100 1 96000-0210

3

2

1

## INSTALLATION OPTION #1 - SHALLOW

| ECO # | REV | DESCRIPTION     | REVISIONS |           |          |
|-------|-----|-----------------|-----------|-----------|----------|
|       |     |                 | BY        | DATE      | APPROVED |
|       | 001 | INITIAL RELEASE | BN        | 9/21/2020 | SD       |

(MAX 1.00[25]-MIN 0.00[0])  
(1.0-0.0")  
REFERENCE ONLY  
VARIES WITH  
CABINET MANUFACTURER

15.00[381] DRAWER WIDTH MINIMUM  
(15.0")

13.00[330] MECHANISM WIDTH  
(13.0")

2.00[51] MINIMUM  
(2.00")

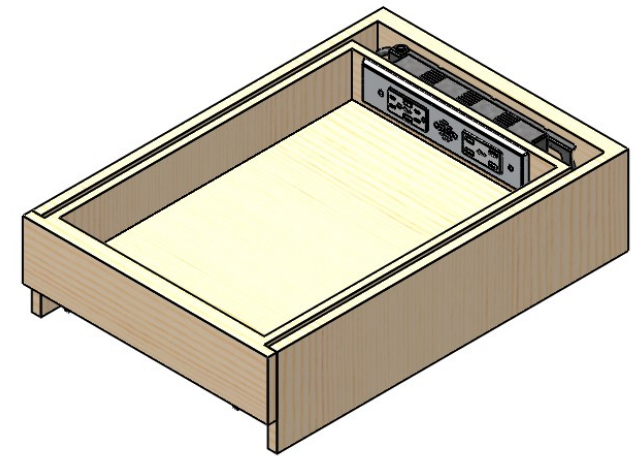
(.50[13] -.75[19])  
(1/2-3/4")  
REFERENCE ONLY  
VARIES WITH  
CABINET MANUFACTURER

24.00[610]  
(24.0")

21.00[533]  
(21.0")

22.0 INCH MAXIMUM  
DRAWER EXTENSION

.25[6]  
1/4" NOMINAL GAP  
REFERENCE ONLY  
VARIES WITH  
CABINET MANUFACTURER



APPLIES TO DOCKING DRAWER BLADE DUO OUTLETS  
P/N 1514-2xx, 2012-2xx

Need help? Have questions? We want to help. Call us at (530) 205-3625.

## NOTES:

- DIMENSIONS ARE IN: INCHES [mm]  
(INCHES FRACTIONAL)
- DIMENSION SHOWN ARE FOR REFERENCE ONLY AND SHOULD BE VERIFIED IN THE FIELD DURING INSTALLATION.

DOCKING DRAWER, INC. CONFIDENTIAL: THIS DOCUMENT AND THE INFORMATION CONTAINED IN IT ARE CONFIDENTIAL AND CANNOT BE COPIED OR DISCLOSED IN WHOLE OR IN PART WITHOUT THE EXPRESS WRITTEN CONSENT OF DOCKING DRAWER, INC.

**Docking  
Drawer™**

TITLE  
**MOUNTING DIAGRAM,  
DOCKING DRAWER  
BLADE DUO**

|       |            |               |
|-------|------------|---------------|
| SIZE  | DWG NO.    | REV           |
| D     | 0170-00096 | 001           |
| SCALE | 1:2        | SHEET 1 OF 11 |

2 0170-00096

1

8

7

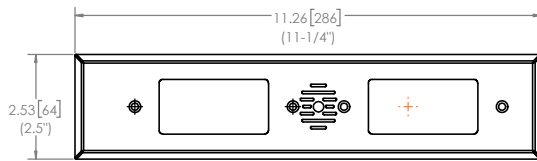
6

5

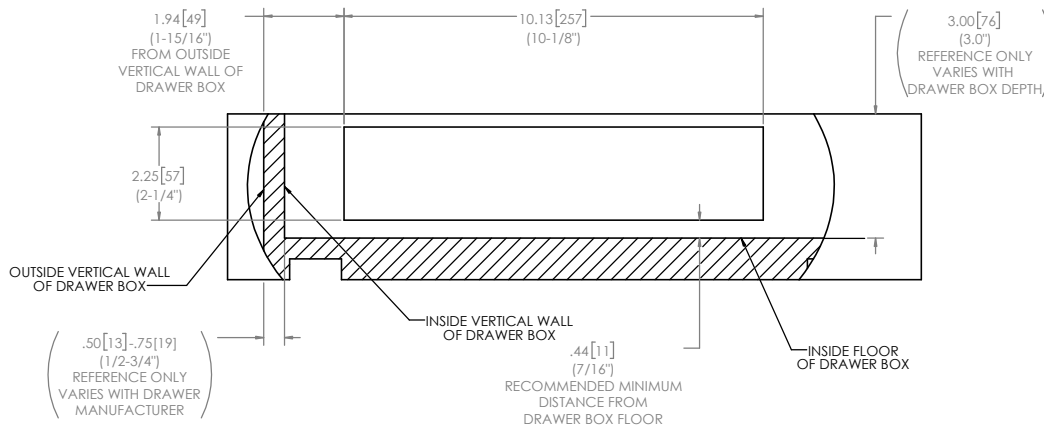
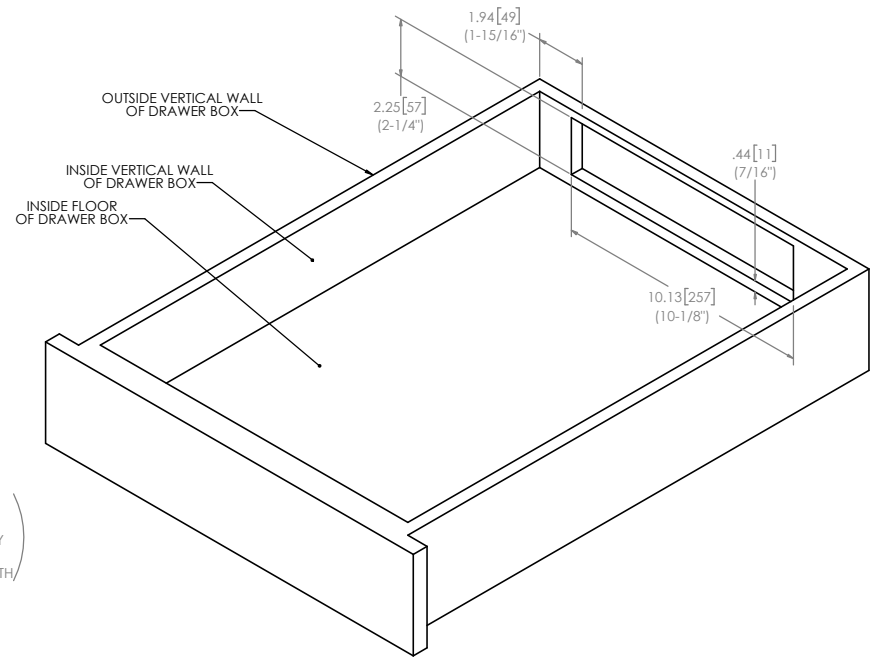
4

3

1



OUTLET COVER PLATE DIMENSIONS



INSTALLATION OPTION #1 - SHALLOW

RECEPTACLE BOX CUTOUT LOCATION  
(VIEW FROM FRONT FACE OF DRAWER)

**NOTES:**

1. DIMENSIONS ARE IN: INCHES [mm]  
(INCHES FRACTIONAL)
2. DIMENSION SHOWN ARE FOR REFERENCE ONLY AND SHOULD BE VERIFIED IN THE FIELD DURING INSTALLATION.

8

7

6

5

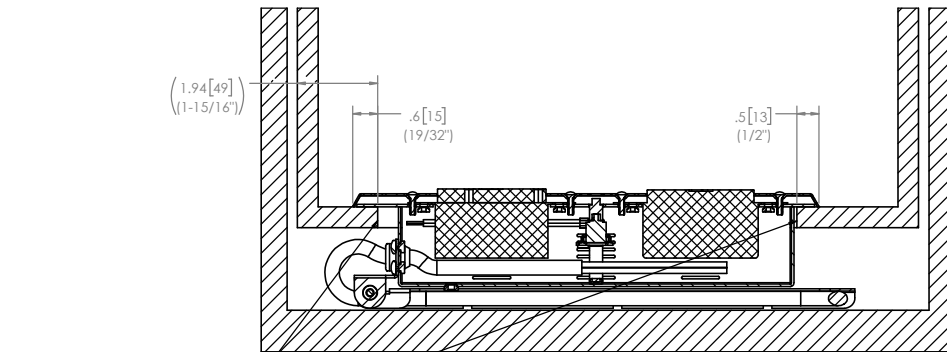
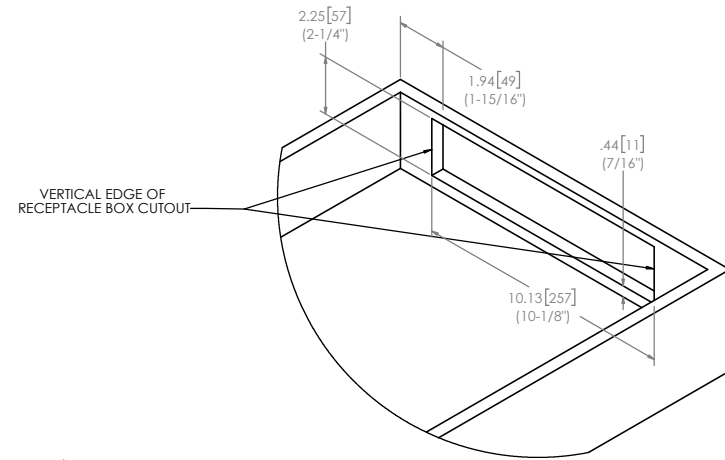
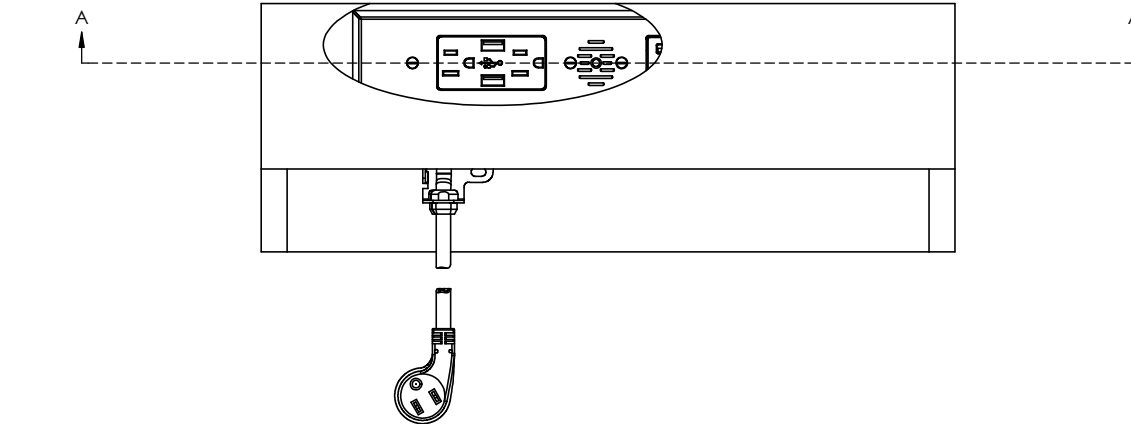
100  
ASB E 96000-0210  
3RD YON  
DMG

3

2

1

## INSTALLATION OPTION #1 - SHALLOW

SECTION A-A  
SCALE 1 : 1.5

JTECH SOLUTIONS, INC. CONFIDENTIAL: THIS DOCUMENT  
AND THE INFORMATION CONTAINED IN IT ARE  
CONFIDENTIAL AND CANNOT BE COPIED OR  
DISCLOSED IN WHOLE OR IN PART WITHOUT THE  
EXPRESS WRITTEN CONSENT OF JTECH SOLUTIONS, INC.

| SIZE  | DWG NO.    | REV           |
|-------|------------|---------------|
| D     | 0170-00096 | 001           |
| SCALE | 1:4        | SHEET 3 OF 11 |

2 0170-00096

1

8

7

6

5

100 4 0170-00096 0170-00096 0170-00096

3

2

1

## INSTALLATION OPTION #1 - SHALLOW

GLIDE/GLIDE MOUNTING  
STAY-OUT AREAGLIDE/GLIDE MOUNTING  
STAY-OUT AREAGLIDE/GLIDE MOUNTING  
STAY-OUT AREAGLIDE/GLIDE MOUNTING  
STAY-OUT AREACHECK FOR GLIDE/GLIDE  
MOUNTING INTERFERENCECHECK FOR GLIDE/GLIDE  
MOUNTING INTERFERENCE

DOCKING DRAWER, INC. CONFIDENTIAL: THIS DOCUMENT  
AND THE INFORMATION CONTAINED IN IT ARE  
CONFIDENTIAL AND CANNOT BE COPIED OR  
DISCLOSED IN WHOLE OR IN PART WITHOUT THE  
EXPRESS WRITTEN CONSENT OF DOCKING DRAWER, INC.

SIZE D DWG NO. 0170-00096 REV 001  
SCALE 2:3 SHEET 4 OF 11

2 0170-00096

1

8

7

6

5

100 S 96000-0210  
ADD INFO ON DWG

3

2

1

# INSTALLATION OPTION #2 - TALL - ABOVE GLIDE MOUNTING

(MAX 1.00[25]-MIN 0.00[0])  
(1.0-0.0")  
REFERENCE ONLY  
VARIES WITH  
CABINET MANUFACTURER

13.00[330] DRAWER WIDTH MINIMUM  
(13.0")

13.00[330] MECHANISM WIDTH  
(13.0")

2.00[51] MINIMUM  
(2.0")

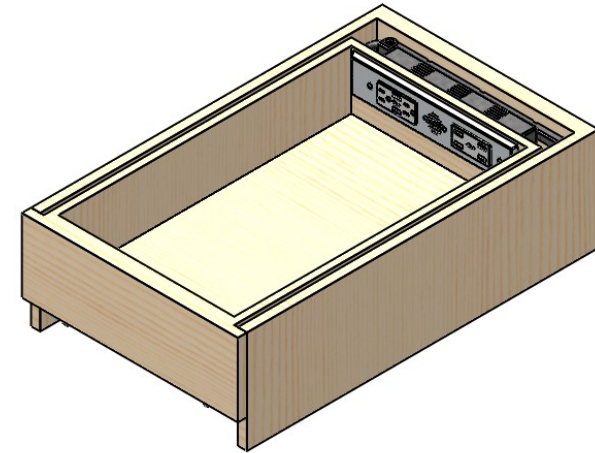
(.50[13]-.75[19])  
(1/2-3/4")  
REFERENCE ONLY  
VARIES WITH  
CABINET MANUFACTURER

24.00[610]  
(24.0")

21.00[533]  
(21.0")

22.0 INCH MAXIMUM  
DRAWER EXTENSION

(.25[6])  
1/4" NOMINAL GAP  
REFERENCE ONLY  
VARIES WITH  
CABINET MANUFACTURER



APPLIES TO DOCKING DRAWER BLADE DUO OUTLETS  
P/N 1514-2xx, 2012-2xx

Need help? Have questions? We want to help. Call us at (530) 205-3625.

## NOTES:

- DIMENSIONS ARE IN: INCHES [mm]  
(INCHES FRACTIONAL)
- DIMENSION SHOWN ARE FOR REFERENCE ONLY AND SHOULD BE VERIFIED IN THE FIELD DURING INSTALLATION.

DOCKING DRAWER, INC. CONFIDENTIAL: THIS DOCUMENT AND THE INFORMATION CONTAINED IN IT ARE CONFIDENTIAL AND CANNOT BE COPIED OR DISCLOSED IN WHOLE OR IN PART WITHOUT THE EXPRESS WRITTEN CONSENT OF DOCKING DRAWER, INC.

**Docking  
Drawer™**

TITLE  
**MOUNTING DIAGRAM,  
DOCKING DRAWER  
BLADE DUO**

SIZE D DWG NO. 0170-00096 REV 001  
SCALE 1:2 SHEET 5 OF 11

2 0170-00096

1

8

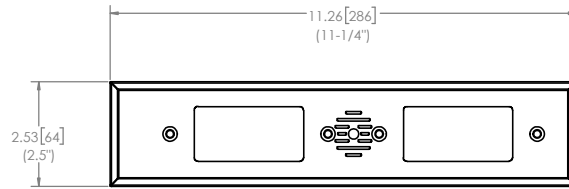
7

6

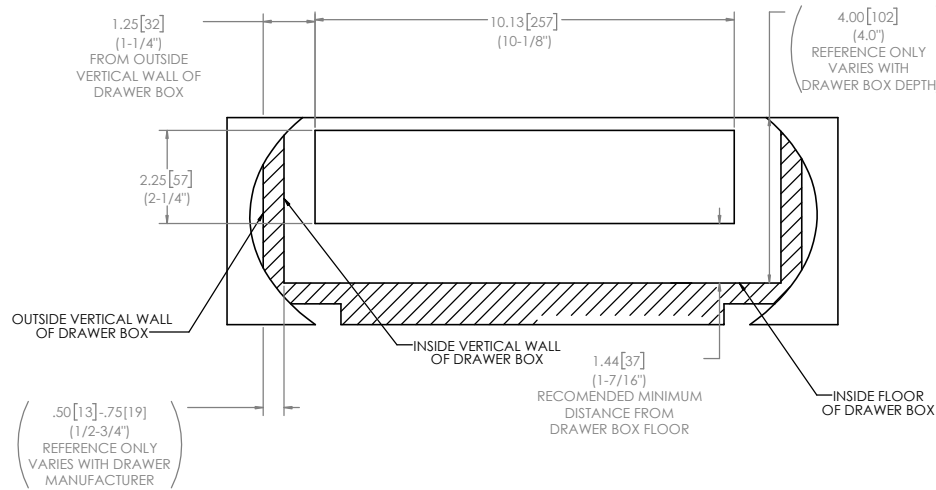
5

4

3

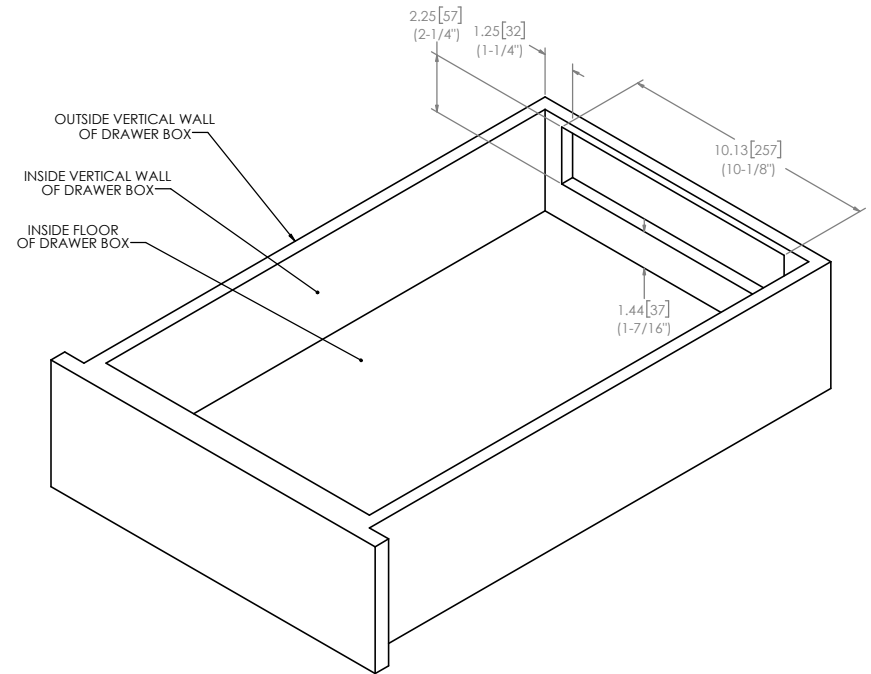


**OUTLET COVER PLATE DIMENSIONS**



**INSTALLATION OPTION #2 - TALL - ABOVE GLIDE MOUNTING**

**RECEPTACLE BOX CUTOUT LOCATION  
 (VIEW FROM FRONT FACE OF DRAWER)**



**NOTES:**

1. DIMENSIONS ARE IN: INCHES [mm]  
 (INCHES FRACTIONAL)
2. DIMENSION SHOWN ARE FOR REFERENCE ONLY AND SHOULD BE VERIFIED IN THE FIELD DURING INSTALLATION.

8

7

6

5

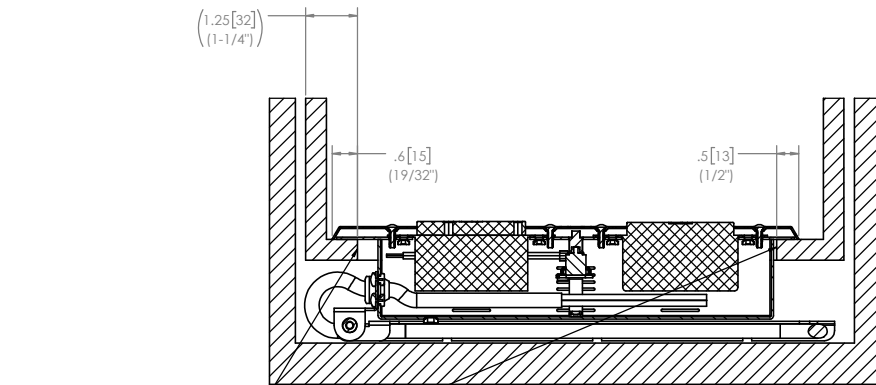
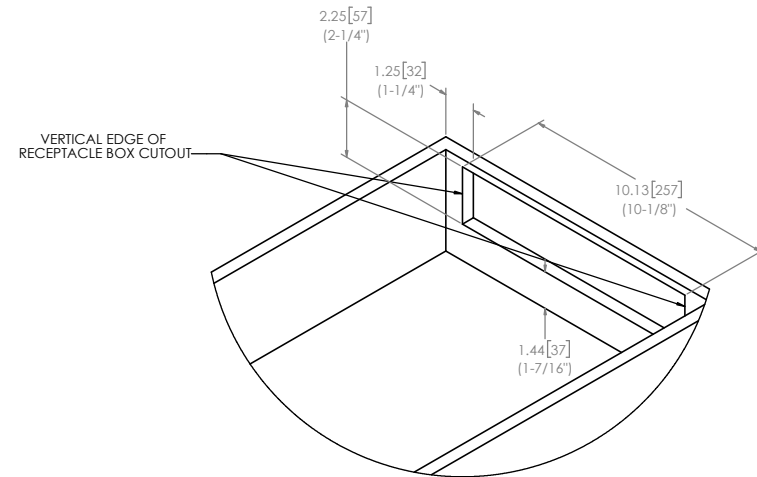
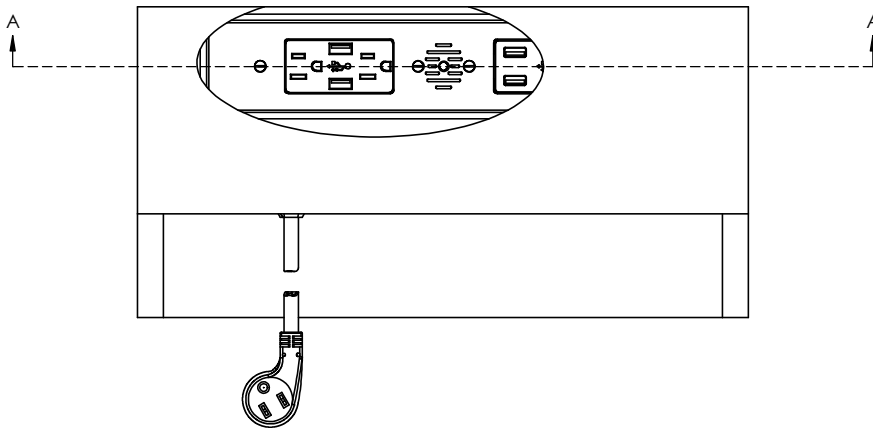
100 L 96000-0210  
A32 2HD 1ON DIMS

3

2

1

## INSTALLATION OPTION #2 - TALL - ABOVE GLIDE MOUNTING

SECTION A-A  
SCALE 1 : 1.5

JTECH SOLUTIONS, INC. CONFIDENTIAL: THIS DOCUMENT  
AND THE INFORMATION CONTAINED IN IT ARE  
CONFIDENTIAL AND CANNOT BE COPIED OR  
DISCLOSED IN WHOLE OR IN PART WITHOUT THE  
EXPRESS WRITTEN CONSENT OF JTECH SOLUTIONS, INC.

| SIZE  | DWG. NO.   | REV.          |
|-------|------------|---------------|
| D     | 0170-00096 | 001           |
| SCALE | 1:4        | SHEET 7 OF 11 |

2 0170-00096

1

8

7

6

5

100 8 96000-0210  
A32 810 10N DMG

3

2

1

## INSTALLATION OPTION #2 - TALL - ABOVE GLIDE MOUNTING

GLIDE/GLIDE MOUNTING  
STAY-OUT AREAGLIDE/GLIDE MOUNTING  
STAY-OUT AREAGLIDE/GLIDE MOUNTING  
STAY-OUT AREAGLIDE/GLIDE MOUNTING  
STAY-OUT AREACHECK FOR GLIDE/GLIDE  
MOUNTING INTERFERENCECHECK FOR GLIDE/GLIDE  
MOUNTING INTERFERENCE

DOCKING DRAWER, INC. CONFIDENTIAL: THIS DOCUMENT  
AND THE INFORMATION CONTAINED IN IT ARE  
CONFIDENTIAL AND CANNOT BE COPIED OR  
DISCLOSED IN WHOLE OR IN PART WITHOUT THE  
EXPRESS WRITTEN CONSENT OF DOCKING DRAWER, INC.

|       |     |       |            |     |     |
|-------|-----|-------|------------|-----|-----|
| SIZE  | D   | NO.   | 0170-00096 | REV | 001 |
| SCALE | 2:3 | SHEET | 8          | OF  | 11  |

2 0170-00096

1

REV  
8 001  
0170-00096  
NO.



8

7

6

5

100 6 96000-0210  
ADD HD CON DIMS

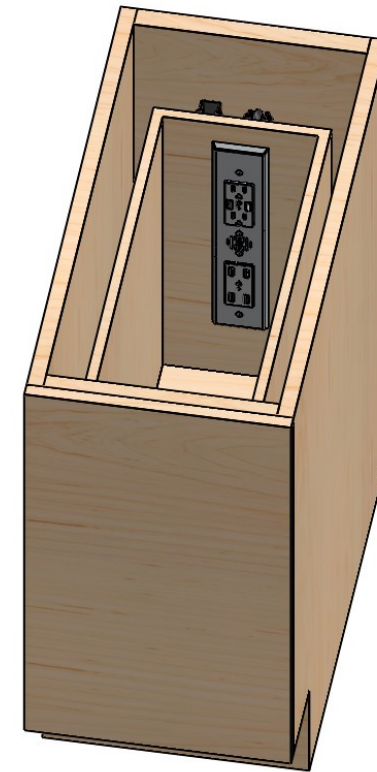
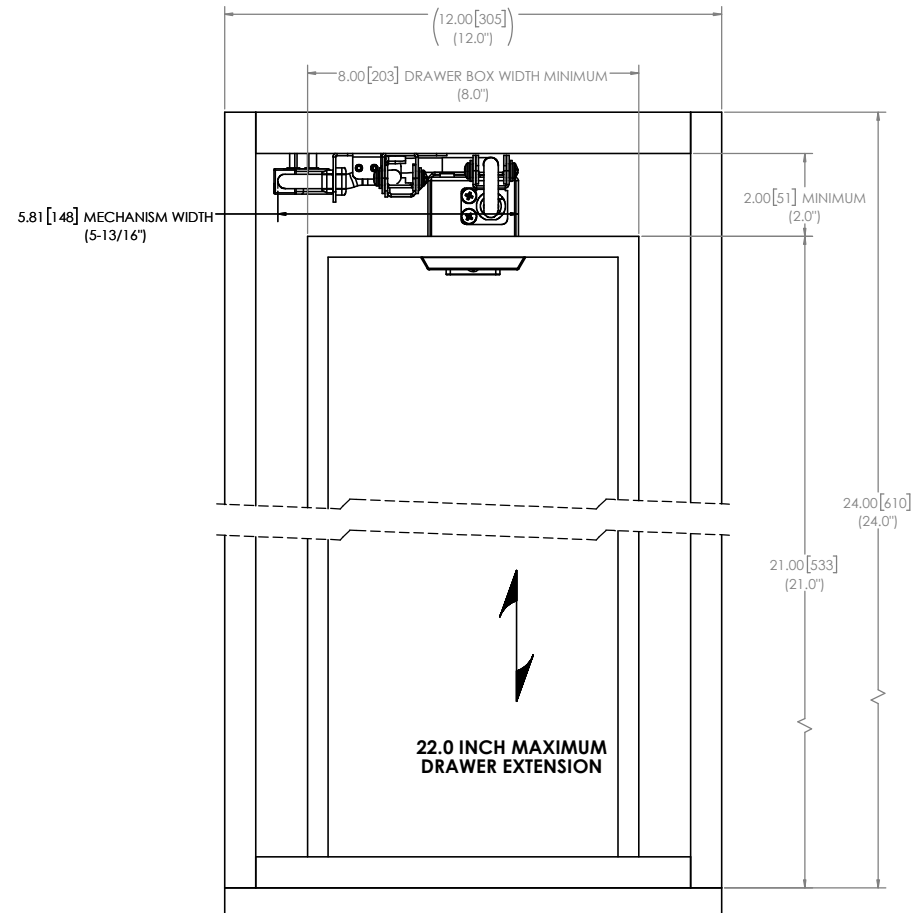
3

2

1

## INSTALLATION OPTION #3 -VERTICAL MOUNTING

| ECO # |  | REV | DESCRIPTION     | BY | DATE       | APPROVED |
|-------|--|-----|-----------------|----|------------|----------|
| 001   |  | 001 | INITIAL RELEASE | BN | 08/26/2020 | SD       |



APPLIES TO DOCKING DRAWER BLADE DUO OUTLETS  
P/N 1514-2xx, 2012-2xx

Need help? Have questions? We want to help. Call us at (530) 205-3625.

## NOTES:

- DIMENSIONS ARE IN: INCHES [mm]  
(INCHES FRACTIONAL)
- DIMENSION SHOWN ARE FOR REFERENCE ONLY AND SHOULD BE VERIFIED IN THE FIELD DURING INSTALLATION.

DOCKING DRAWER, INC. CONFIDENTIAL: THIS DOCUMENT  
AND THE INFORMATION CONTAINED IN IT ARE  
CONFIDENTIAL AND CANNOT BE COPIED OR  
DISCLOSED IN WHOLE OR IN PART WITHOUT THE  
EXPRESS WRITTEN CONSENT OF DOCKING DRAWER, INC.

**Docking  
Drawer™**

TITLE  
**MOUNTING DIAGRAM,  
DOCKING DRAWER  
BLADE DUO**

SIZE DWG NO. 0170-00096 REV 001  
SCALE 1:2 SHEET 9 OF 11

8

7

6

5

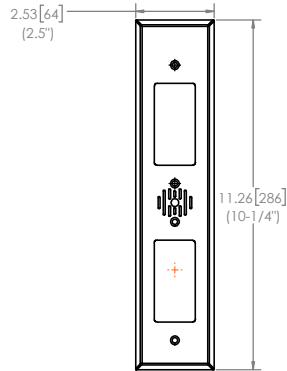
4

3

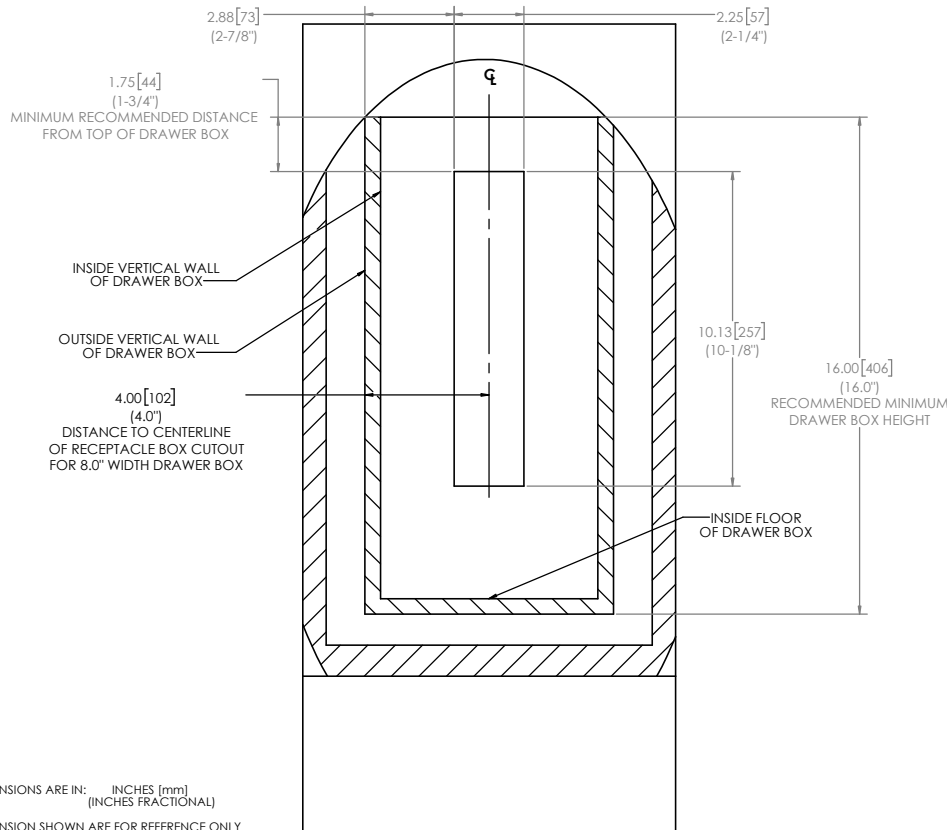
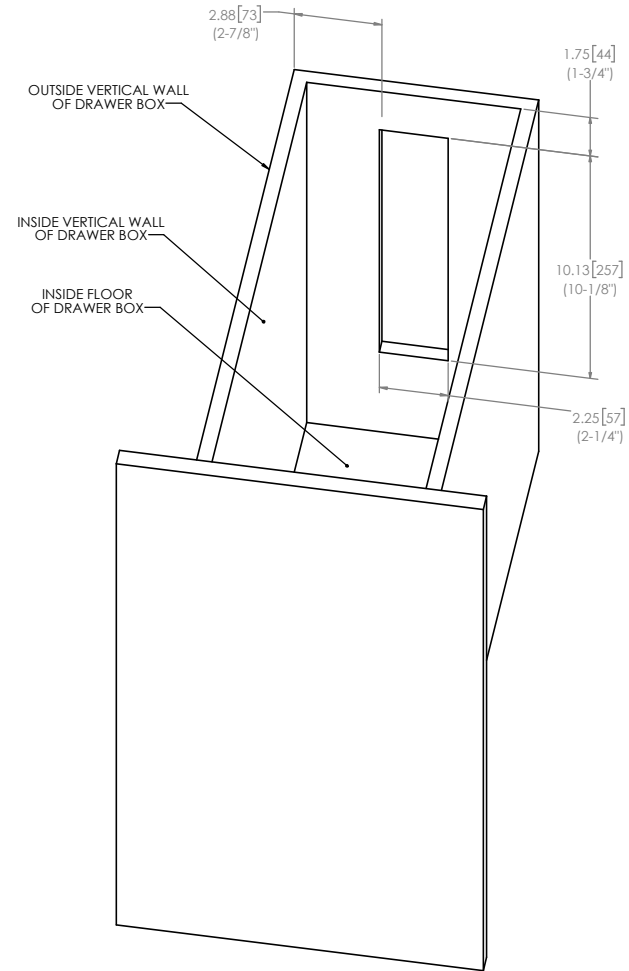
2 0170-00096

1

# INSTALLATION OPTION #3 -VERTICAL MOUNTING



OUTLET COVER PLATE DIMENSIONS



RECEPTACLE BOX CUTOUT LOCATION  
(VIEW FROM FRONT FACE OF DRAWER)

## NOTES:

1. DIMENSIONS ARE IN: INCHES (mm)  
(INCHES FRACTIONAL)
2. DIMENSION SHOWN ARE FOR REFERENCE ONLY  
AND SHOULD BE VERIFIED IN THE FIELD  
DURING INSTALLATION.

8

7

6

5

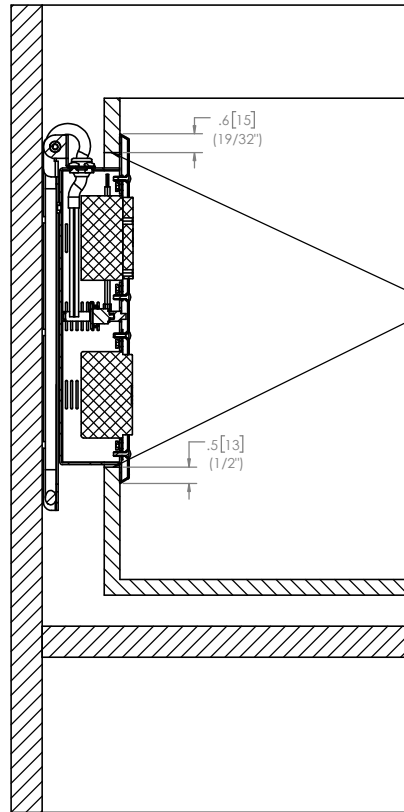
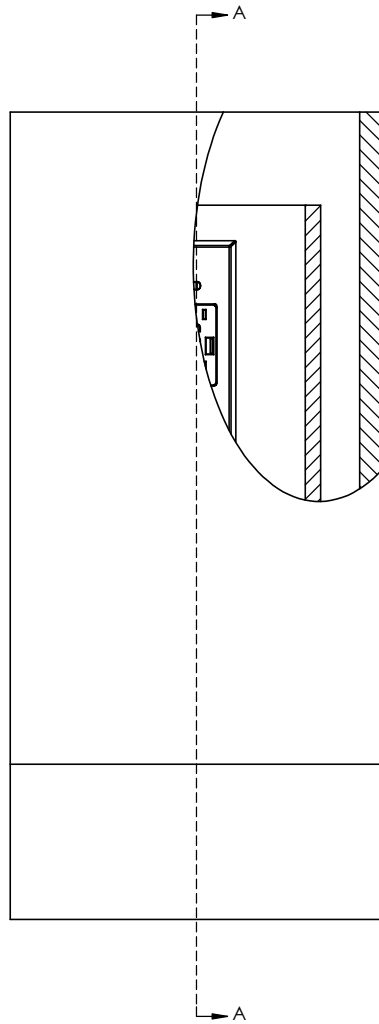
100 11 96000-0210  
ASD JTD CON DWG

3

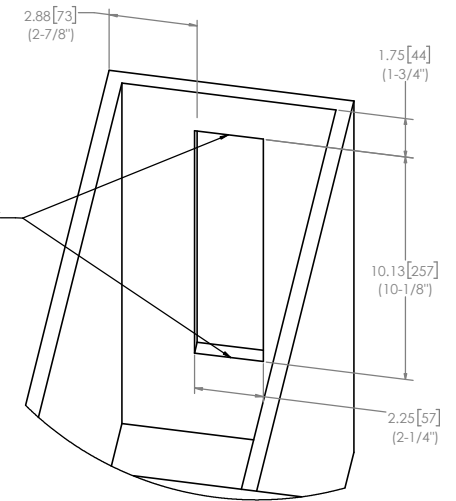
2

1

## INSTALLATION OPTION #3 - VERTICAL MOUNTING



SECTION A-A

HORIZONTAL EDGE OF  
RECEPTACLE BOX CUTOUTHORIZONTAL EDGE OF  
RECEPTACLE BOX CUTOUT

JTECH SOLUTIONS, INC. CONFIDENTIAL: THIS DOCUMENT  
AND THE INFORMATION CONTAINED IN IT ARE  
CONFIDENTIAL AND CANNOT BE COPIED OR  
DISCLOSED IN WHOLE OR IN PART WITHOUT THE  
EXPRESS WRITTEN CONSENT OF JTECH SOLUTIONS, INC.

| SIZE  | DWG NO.    | REV            |
|-------|------------|----------------|
| D     | 0170-00096 | 001            |
| SCALE | 1:2        | SHEET 11 OF 11 |

2 0170-00096

1