

TECHNICAL DATA AND INSTALLATION FOR FRAMED KITCHEN CABINETS

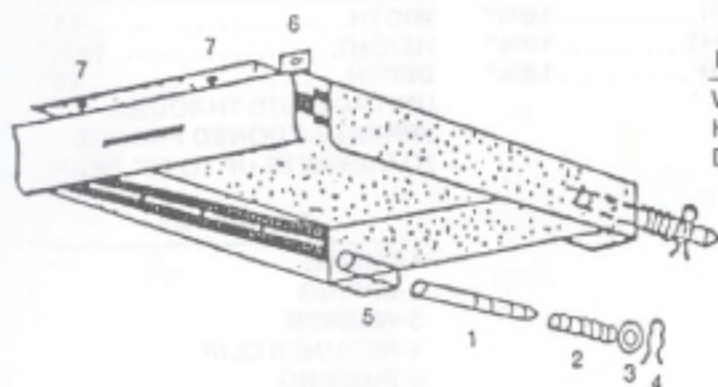


FIGURE "A"

DIMENSIONS OF UNIT

WIDTH.....	10¾"
HEIGHT.....	19½"
DEPTH.....	18¾"

MINIMUM DIMENSIONS OF CABINET OPENING

WIDTH.....	11"
HEIGHT.....	19½"
DEPTH.....	22"

UNIT ADJUSTS THROUGH
SPRING-ACTIONED PRONGS
TO CABINETS UP TO 26" DEEP.

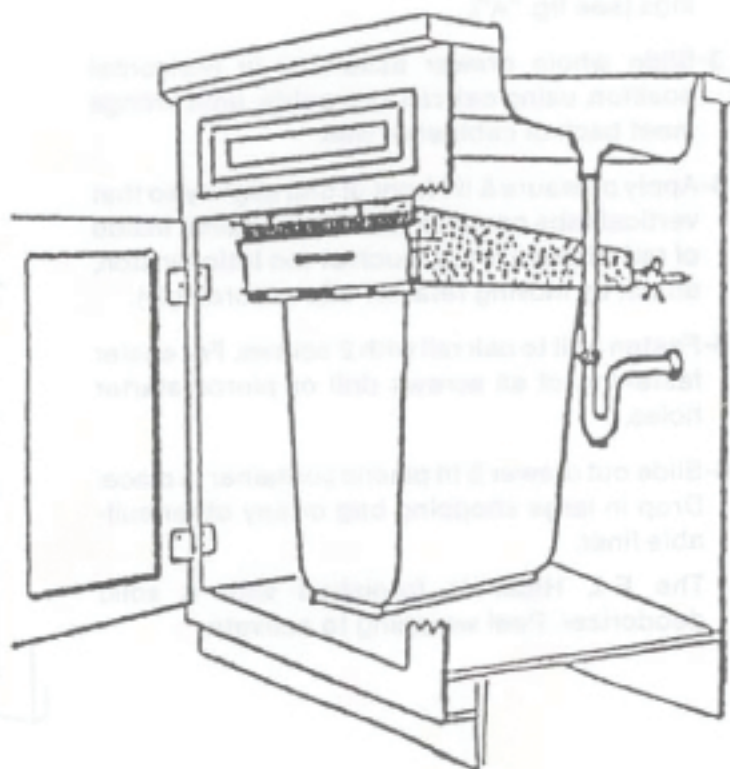
FIGURE "A"

- 1-PRONG
- 2-SPRING
- 3-WASHER
- 4-RETAINER CLIP
- 5-BUSHING
- 6-VERTICAL TAB
- 7-HOLE FOR SCREW

INSTALLATION

- 1-Assemble prongs by inserting retainer clip into second groove from point. Slip on washer and spring respectively. Insert prongs into bushings (see fig. "A").
- 2-Slide whole drawer assembly in horizontal position, using upper rail of cabinet as a guide, until prongs meet back of cabinet or wall.
- 3-Apply pressure & lift front of unit slightly so that vertical tabs come to rest flush against inside of rail. (If there is too much or too little tension, adjust by moving retainer clip accordingly).
- 4-Fasten unit to oak rail with 2 screws. For easier fastening of all screws drill or pierce starter holes.
- 5-Slide out drawer & fit plastic container in place. Drop in large shopping bag or any other suitable liner.

FIGURE "B"



THE E-Z HIDER TRASH RECEPTACLE WORKS LIKE A DRAWER, KEEPS TRASH IN ITS PLACE & OUT OF SIGHT.

TECHNICAL DATA AND INSTALLATION FOR FRAMELESS KITCHEN CABINETS

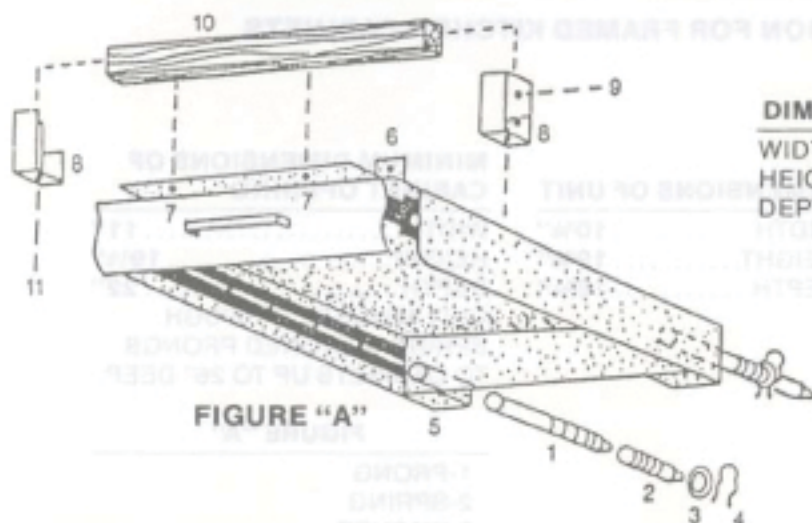


FIGURE "A"

DIMENSIONS OF UNIT

WIDTH.....	10 3/4"
HEIGHT.....	19 1/2"
DEPTH.....	18 3/4"

MINIMUM DIMENSIONS OF CABINET OPENING

WIDTH.....	11"
HEIGHT.....	19 1/2"
DEPTH.....	22"

UNIT ADJUSTS THROUGH
SPRING-ACTIONED PRONGS
TO CABINETS UP TO 26" DEEP.

FIGURE "A"

INSTALLATION

1-To fasten oak rail you must have a minimum of 19 1/2" from bottom of cabinet to bottom of bracket (See fig. B). Fasten brackets (#8 L-R) to sides of cabinet (9). Fit and mount oak (#10) into brackets, secure rail to brackets (11).

2-Assemble springs by inserting retainer clip into second groove from point. Slip on washer and spring respectively. Insert prongs into bushings (see fig. "A").

3-Slide whole drawer assembly in horizontal position, using oak rail as a guide, until prongs meet back of cabinet or wall.

4-Apply pressure & lift front of unit slightly so that vertical tabs come to rest flush against inside of rail. (If there is too much or too little tension, adjust by moving retainer clip accordingly).

5-Fasten unit to oak rail with 2 screws. For easier fastening of all screws drill or pierce starter holes.

6-Slide out drawer & fit plastic container in place. Drop in large shopping bag or any other suitable liner.

NOT SUPPLIED—10-OAK RAIL
11-HOLES FOR SECURING
OAK RAIL

FIGURE "B"

