

IMPROVED DESIGN

Round Controllers

12VDC
24VDC

Max Wattage: 12VDC/60W; 24VDC/96W

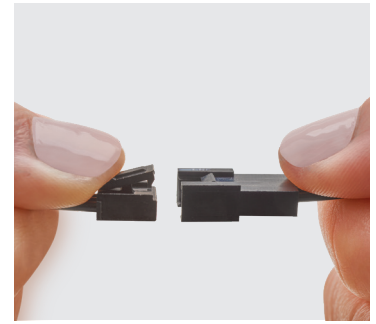
79" (2 m) input cord and 6" (152 mm) output cord attached

Controls all Tresco® single color dimmable low voltage lights

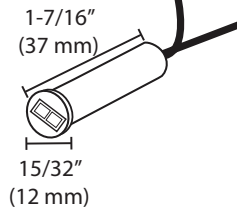
Available in a Black or Nickel finish

Improved smaller design allows controllers to be easily recessed using a 1/2" (13 mm) drill bit

Recess or surface mount with included surface mount clip

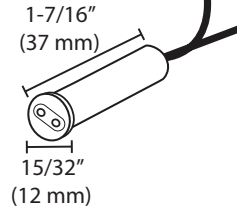


The addition of small connectors allow for wire shortening and easier wire management during install.



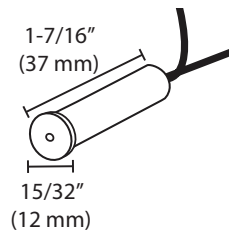
Single Door Sensor

Door open, light on; door closed, light off
Sensor Range: 1/16" - 2" (2 mm - 50 mm)



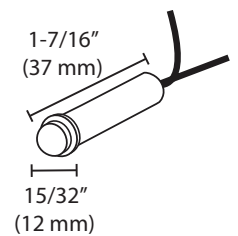
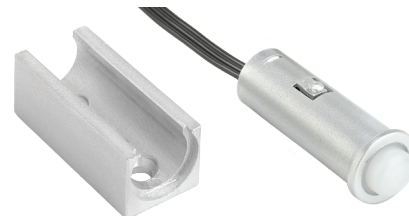
Two Door Sensor

Either door open, light on; both doors closed, light off
Sensor Range: 1/16" - 2" (2 mm - 50 mm)



Touch Dimmer

Touch on/off and 0-100% dimming control
Hold finger down for dimming
Touch dimmer once to turn on/off
Power failure memory (retains last setting)



Motion Sensor

Turns on when human motion is detected
Sensor Range: 0" - 118" (0 mm - 3000 mm)
Viewing degree: 120°
Time on: 30 secs if no motion



Part #	Description
L-RSDS-**-1	12/24VDC 60W/96W Round Single Door Sensor
L-RSDS2-**-1	12/24VDC 60W/96W Round Two Door Sensor
L-RSDIM-**-1	12/24VDC 60W/96W Round Touch Dimmer
L-RSMOT-NI-1	12/24VDC 60W/96W Round Motion Sensor, Nickel

**Available in Black (BL) and Nickel (NI). Surface mount clip packaged with each controller. Motion Sensor available in Black (BL) with a minimum quantity order.