

# Technical Information

## Dynapro

### 2D and 3D Front Locking Device with Height, Side, and Depth Adjustment

#### 3D Locking Devices

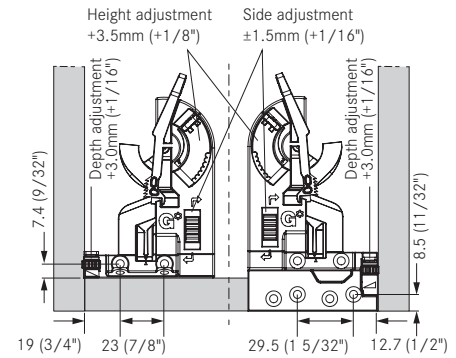


- Provides 2D or 3D adjustment for drawers
- For standard width drawers
- For standard width inset drawers
- Minimum inside drawer width 150mm (5 7/8")
- Lightweight, high strength material
- Height adjustment range: +3.5mm
- Side adjustment range:  $\pm 1.5\text{mm}$
- Depth adjustment range: +3.0mm forward adjustment (3D version only)
- Optional depth adjuster available for 2D version

Pre-drilling recommended  $\varnothing 2.5\text{mm}$  (3/32")

Patent Pending

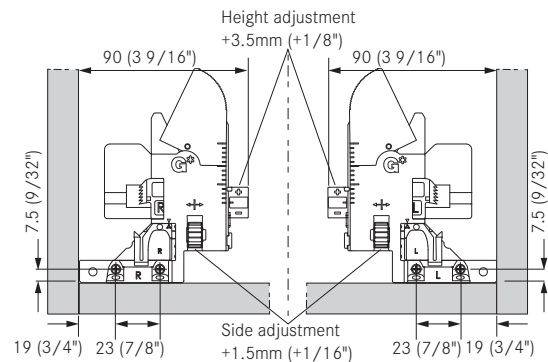
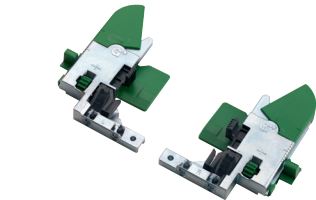
#### 2D Locking Devices



### Front Locking Device with Height and Side Adjustment

- Provides 2D adjustment for drawers
- For standard width drawers
- For standard width inset drawers
- Minimum inside drawer width 180mm (7 3/32")
- Height adjustment range: +3.5mm
- Side adjustment range: max  $\pm 1.5\text{mm}$

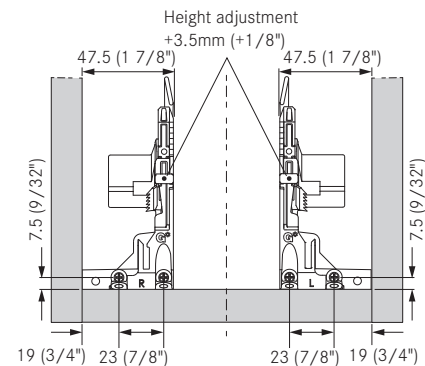
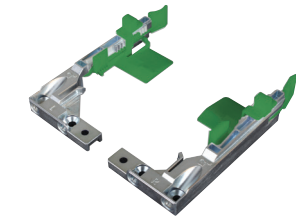
Pre-drilling recommended  $\varnothing 2.5\text{mm}$  (3/32")



### Narrow Front Locking Device with Height Adjustment

- Provides height adjustment for drawers
- For narrow and standard width drawers
- For narrow and standard width inset drawers
- Minimum inside drawer width 95mm (3 3/4")
- Height adjustment range: +3.5mm

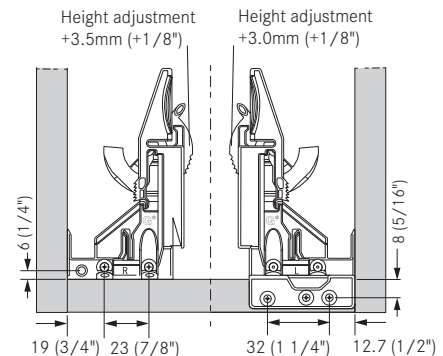
Pre-drilling recommended  $\varnothing 2.5\text{mm}$  (3/32")



### Eco Front Locking Device with Height Adjustment

- Provides height adjustment for drawers
- For standard width drawers
- For standard width inset drawers
- Minimum inside drawer width 150mm (5 7/8")
- Height adjustment range: +3.5mm (3.0 with flange)

Pre-drilling recommended  $\varnothing 2.5\text{mm}$  (3/32")

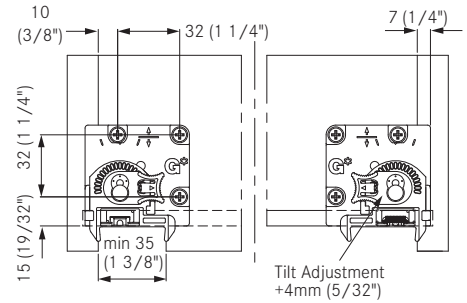


## Tilt Adjustment Adapter



- Provides tilt adjustment for Dynapro, Dynapro heavy duty, and Dynapro extended lengths
- Tilt adjustment range: +4mm (5/32")
- For frameless or face frame application

Pre-drilling recommended Ø2.5mm (3/32")  
Patent Pending



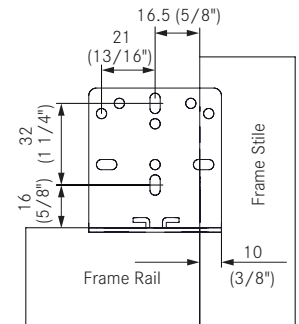
## Rear Mounting Brackets

### Rear Mounting Bracket for 12" - 21" Slides



- For 12" - 21" drawers
- For face frame application

Pre-drilling recommended Ø2.5mm (3/32")

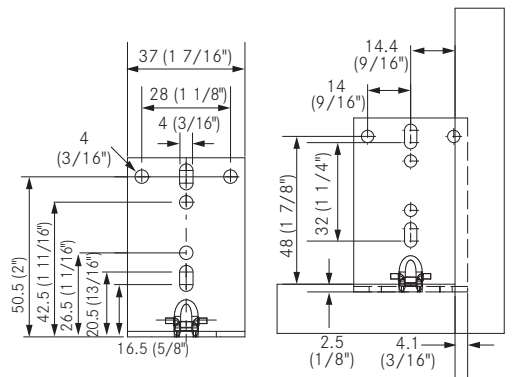


### Narrow Rear Mounting Bracket for 12" - 21" Slides



- For 12" - 21" drawers
- For face frame application

Pre-drilling recommended Ø2.5mm (3/32")



## Rear Mounting Socket for 9" Slides



- For 9" drawer
- For face frame application
- For installation depth min 269mm (10 19/32") to 299mm (11 3/4")

Pre-drilling recommended Ø2.5mm (3/32")

