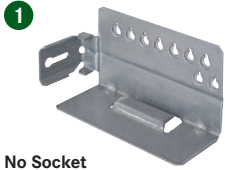


Accessories

Elite Plus

V-notch Rear Mounting Brackets, 19mm

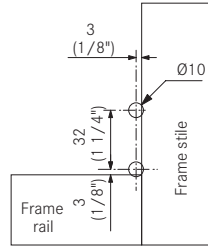


No Socket



With Socket

- 19mm rear mounting brackets
- Side-to-side adjustment $\pm 6\text{mm}$ ($1/4''$)
- Sockets attach to cabinet member with Euro screws

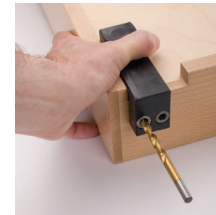


Description	Item No.	PU
1 V-notch, metal, no socket, left	02212-12	200
V-notch, metal, no socket, right	02213-12	200
2 V-notch, metal, with socket, left	02216-12	200
V-notch, metal, with socket, right	02217-12	200

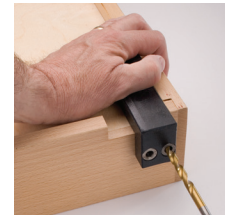
Drilling Template



- Use to precisely bore holes in the drawer back
- Use with a standard $1/4''$ (6mm) drill bit and stop collar



Left Side Drilling



Right Side Drilling

Description	Item No.	PU
Elite Plus drilling template	02511-01	1

Screws

Euro Screw, Nickel-plated



Description	Item No.	PU
Euro Screw 11mm (7/16") Pozi	499.360.61.1015	500
Euro Screw 13mm (1/2") Pozi	499.360.61.3015	500

Wood Screw, Nickel-plated



Description	Item No.	PU
#6 x 5/8" FHP, NI	81001-43	500
#6 x 3/4" FHP, NI	81003-43	500

PU - Packaging unit