

Extra Heavy-Duty

175 lb. Load Class

1/2" Side Clearance

Max. Drawer Width: 42"



8520 Extra Heavy-Duty Lateral Drawer Slide

The 8520 Extra Heavy-Duty Lateral Drawer Slide has been designed to accommodate wider and heavier drawers for today's challenging applications in the commercial, residential and educational markets.

Applications

- Wood residential and commercial furniture
- Architectural, laboratory and school casework
- Store fixtures and displays
- Storage drawers

Specifications

Model: 8520 Extra Heavy-Duty Lateral Drawer Slide

Mounting: Side

Disconnect: Quick Release Rail

Hole Pattern: 32mm and Traditional

Face Frame Mounting: No

Type: Ball-Bearing

Travel: Full Extension

Finish: Anochrome

Length: 16", 18", 20"

Clearance: .50" + .03" - 0" on each side

Height: 3.79" [96mm]

Packaging: Bulk Pack (8520B): all sizes - 5 pair per carton

Poly Pack (8520P): all sizes - 5 pair per carton

Quantity Pack (8520Q): all sizes - 10 pair multiple cartons

Action: Progressive

Slide Configuration: Handed

Quick Release Rail: Unhanded/Reversible

Rating

Load: 175 lb.

Max. Drawer Width: 42"

As with all Knap & Vogt drawer slides, the 8520 is designed to meet or exceed ANSI performance standards as established by BIFMA, BHMA and KCMA.

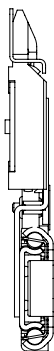
Hardware

#7 x 1/2" Phillips Pan Head

Warranty

Limited Lifetime Warranty

Profile



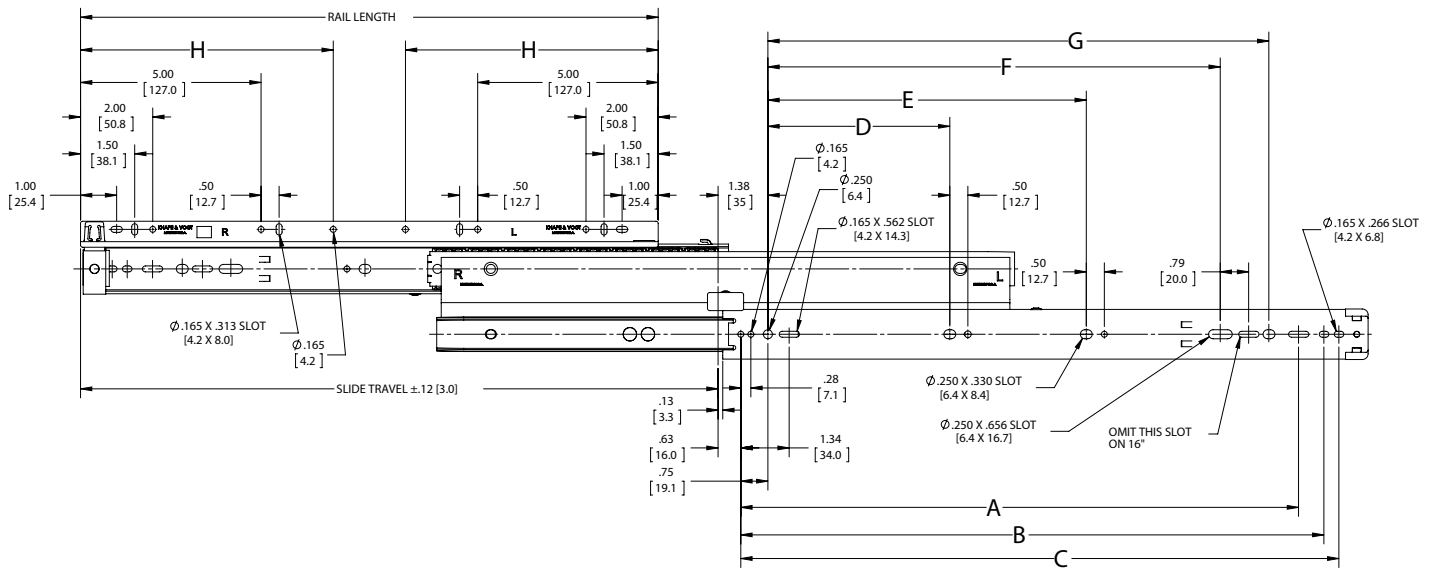
Clearance

1/2" + 1/32" - 0"

.50" + .03" - 0"

12.7mm + .8mm - 0mm

Charted Information



SKU Number*	Slide Size inch/mm	Travel inch/mm	Rail Length inch/mm	A inch/mm	B inch/mm	C inch/mm	D inch/mm	E inch/mm	F inch/mm	G inch/mm	H inch/mm
8520B 16	16" [400mm]	15.64" [397.3mm]	14.00" [355.6mm]	13.45" [341.7mm]	14.16" [359.5mm]	14.57" [370.1mm]	5.04" [128mm]	-	11.34" [288mm]	-	-
8520B 18	18" [450mm]	17.64" [448.1mm]	16.00" [406.4mm]	15.45" [392.5mm]	16.16" [410.3mm]	16.57" [420.9mm]	5.04" [128mm]	8.82" [224mm]	12.60" [320mm]	13.86" [352mm]	8.00" [203.2mm]
8520B 20	20" [500mm]	19.64" [498.9mm]	18.00" [457.2mm]	17.45" [443.3mm]	18.16" [461.1mm]	18.57" [471.7mm]	5.04" [128mm]	8.82" [224mm]	15.12" [384mm]	-	8.00" [203.2mm]

*Also available in Poly Pack (eg, 8520P 10, etc.)



KNAPE & VOGT.

2700 Oak Industrial Dr. NE
Grand Rapids, MI 49505-6026 USA
1.800.253.1561 | 616.459.3311
Fax: 877.636.3290
www.kv.com

Knap & Vogt reserves the right to change product specifications at any time without notice and without incurring responsibility for existing units.

©2016 Knap & Vogt. KV and the KV logo are trademarks of Knap & Vogt.

OL2814/0116