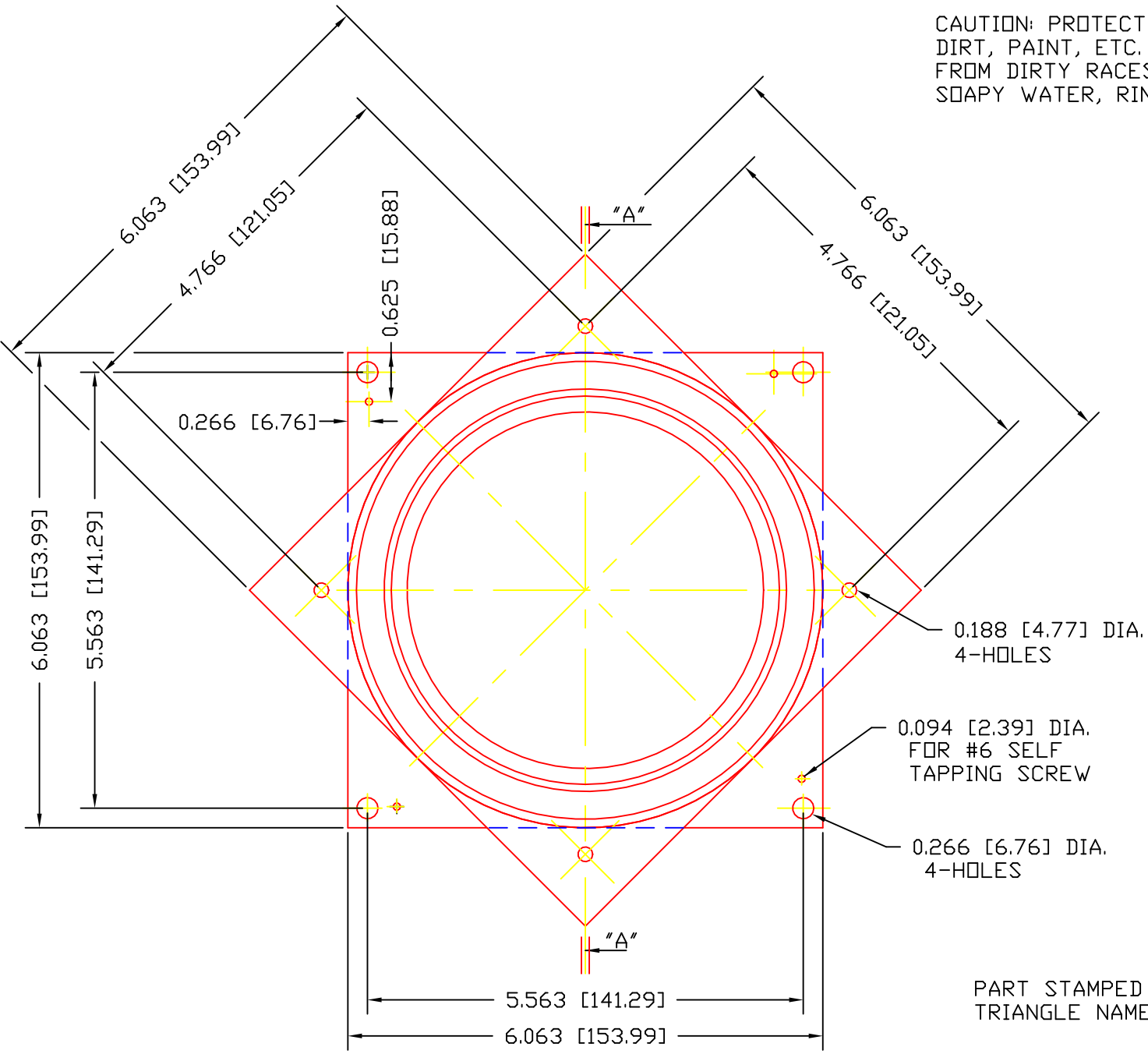
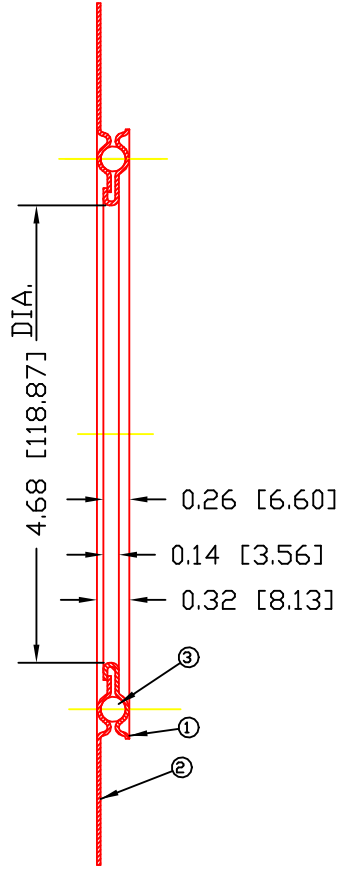


CAUTION: PROTECT BALLS AND RACES FROM SAWDUST, DIRT, PAINT, ETC. SHOULD BEARING BECOME "ROUGH" FROM DIRTY RACES, FLUSH THOROUGHLY WITH HOT SOAPY WATER, RINSE, OVEN DRY AND RE-OIL.



SECTION "A-A"



PART STAMPED WITH TRIANGLE NAME STAMP

3	BALLS6	BALL	1
2	1068	RACE-PLAIN	1
1	1067	RACE-LOCKING	1
DET	PART NUMBER	DESCRIPTION	AMT
C		TRIANGLE MANUFACTURING CO.	
		OSHKOSH, WI.	

NAME	6" L.S.B.		
USED IN	////		
PLATING	ELECTRO-GALV	DATE	4-14-76
MATERIAL	SEE DET	DRAWN	SP
ALL DIMS ±.020 UNLESS SPECIFIED	CHECKED	HJK	PART NO.
	SCALE	1 / 1	6C

CHANGE LEVEL
E 101-05-94